

Report No.:32.08011-ECO Track Light

Test Time: 2022-04-28 18:47

Luminaire Property

Luminaire Category: Bridgelux V13C 3000K CRI90

Voltage: 221.0 V

Current: 0.284 A

Power: 36.00 W

Power Factor: 0.568

Photometric Results

CIE Class: Direct

Measurement Flux: 3134.2 lm

Downward Ratio: 100%

Total Rated Lamp Lumens: 3134.2 lm

Efficiency: 100%

Upward Ratio: 0%

Horizontal Diffuse Angle(25%,50%,75%,100%): H30.3,H22,H14.3,H1

Vertical Diffuse Angle(25%,50%,75%,100%): V30.3,V22,V14.3,V1

Luminaire Efficacy Rating (LER): 87

Central Intensity: 17885.12 cd

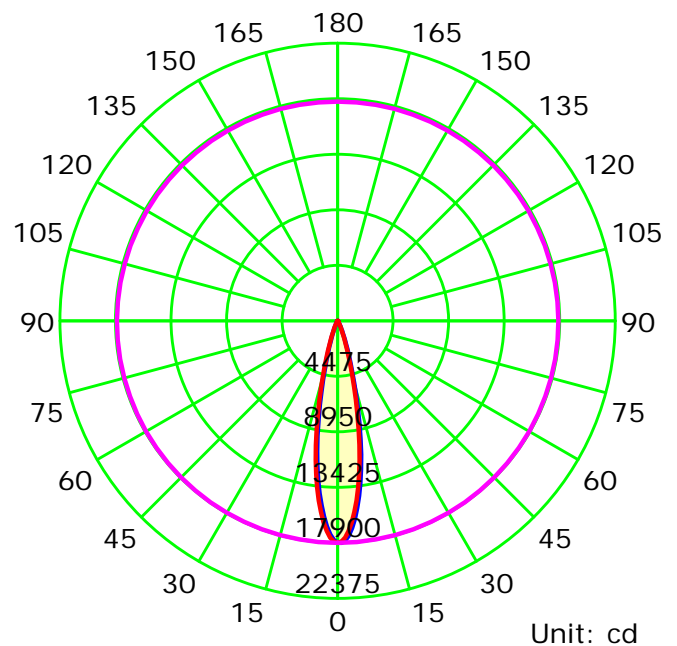
Max. Intensity: 17899.59 cd

Pos of Max. Intensity: H0 V1

Picture Of Luminaire



Luminous Intensity Distribution Curve



Average Diffuse Angle(50%): 22.0°

— C0-C180 — C90-C270 — G1

C Plane (°):0.0-180.0: 180.0

Test Lab:

Test Type: TYPE C

Temperature:

Operator:

Gamma Plane (°):0.0-90.0: 1.0

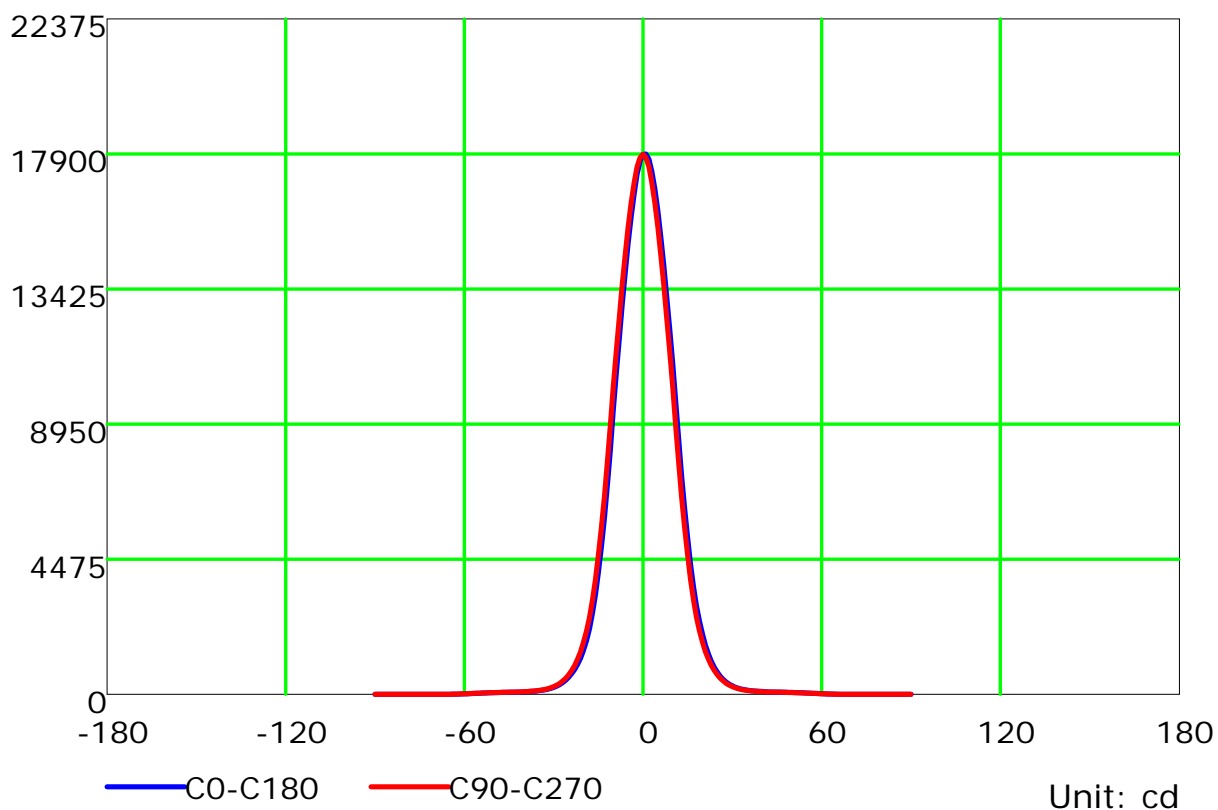
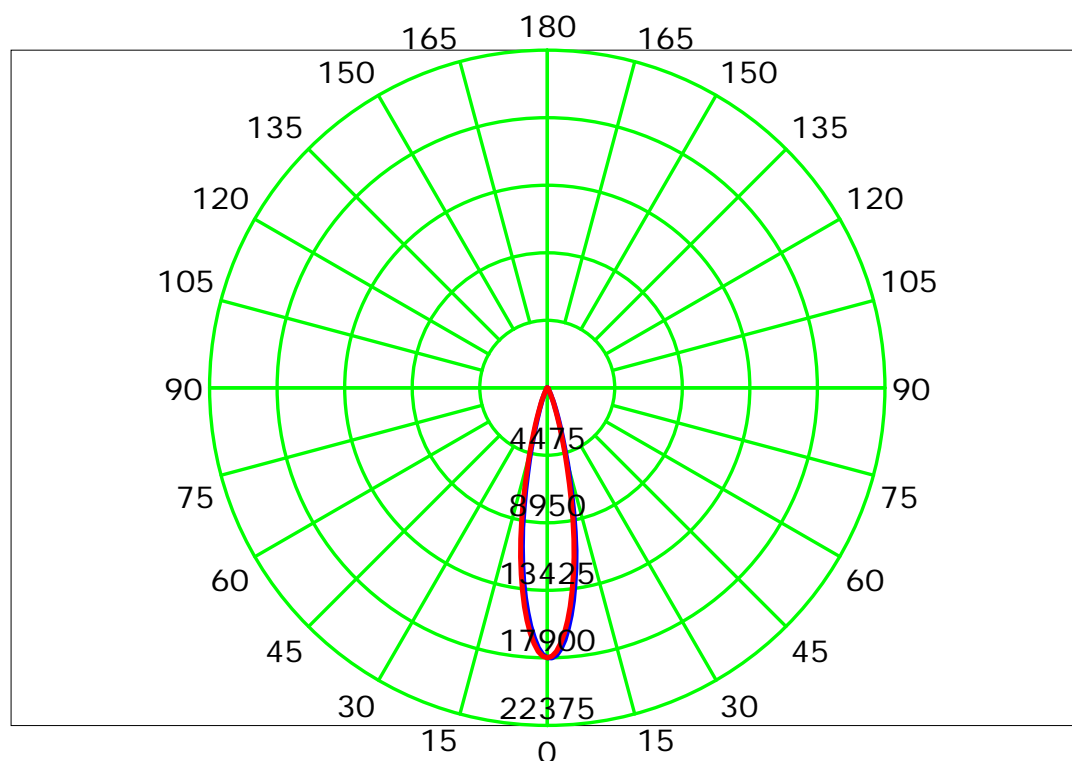
Test Device: CHL-6E

Distance: 3.000 m

Humidity:

Inspector:

Luminous Intensity Distribution Curve



C Plane (°):0.0-180.0: 180.0

Test Lab:

Test Type: TYPE C

Temperature:

Operator:

Gamma Plane (°):0.0-90.0:1.0

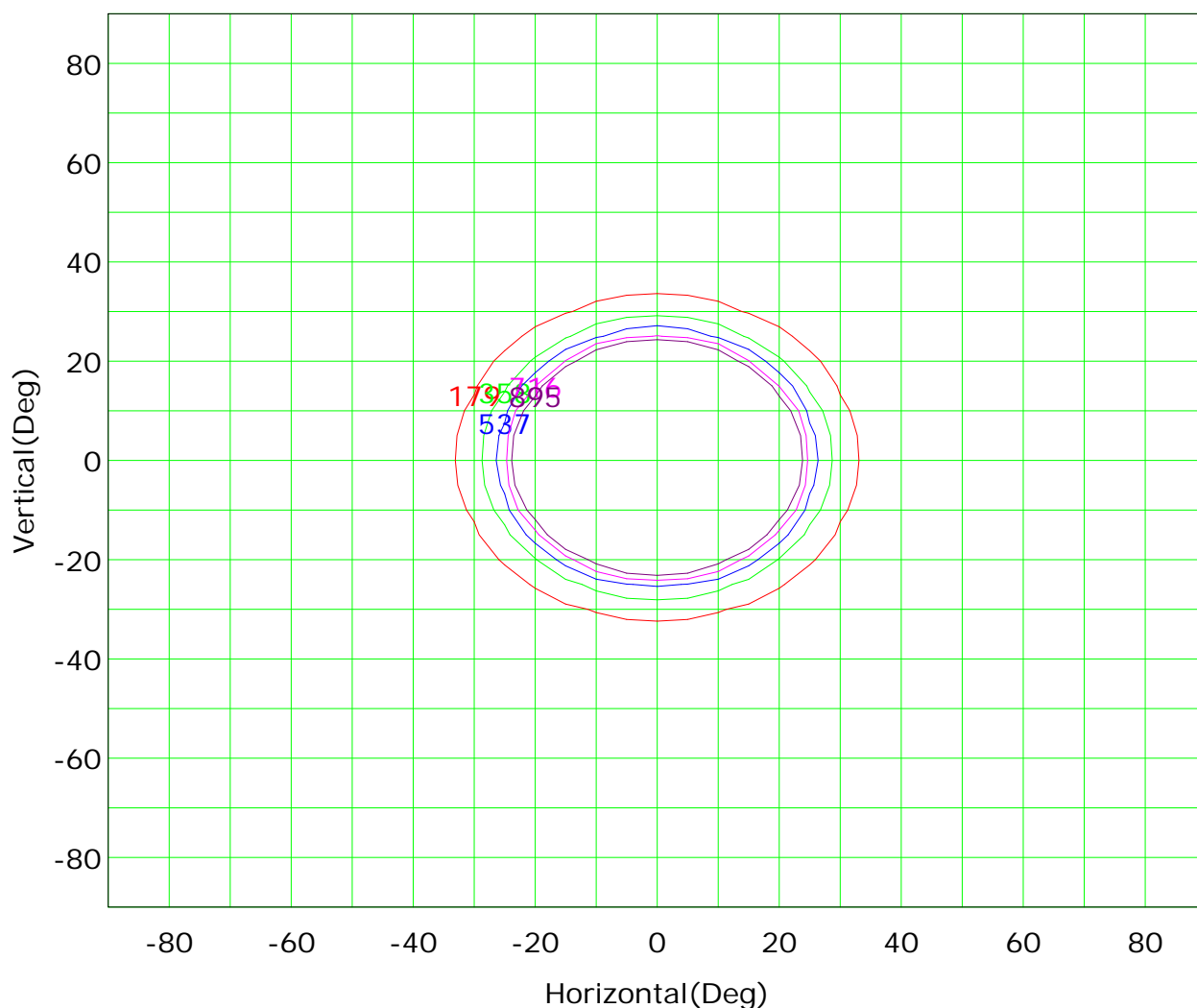
Test Device: CHL-6E

Distance: 3.000 m

Humidity:

Inspector:

Isocandela (rectangle)



Imax (100%): 17900 cd

(1%): 179 cd

(3%): 537 cd

(5%): 895 cd

(2%): 358 cd

(4%): 716 cd

C Plane (°):0.0-180.0: 180.0

Test Lab:

Test Type: TYPE C

Temperature:

Operator:

Gamma Plane (°):0.0-90.0: 1.0

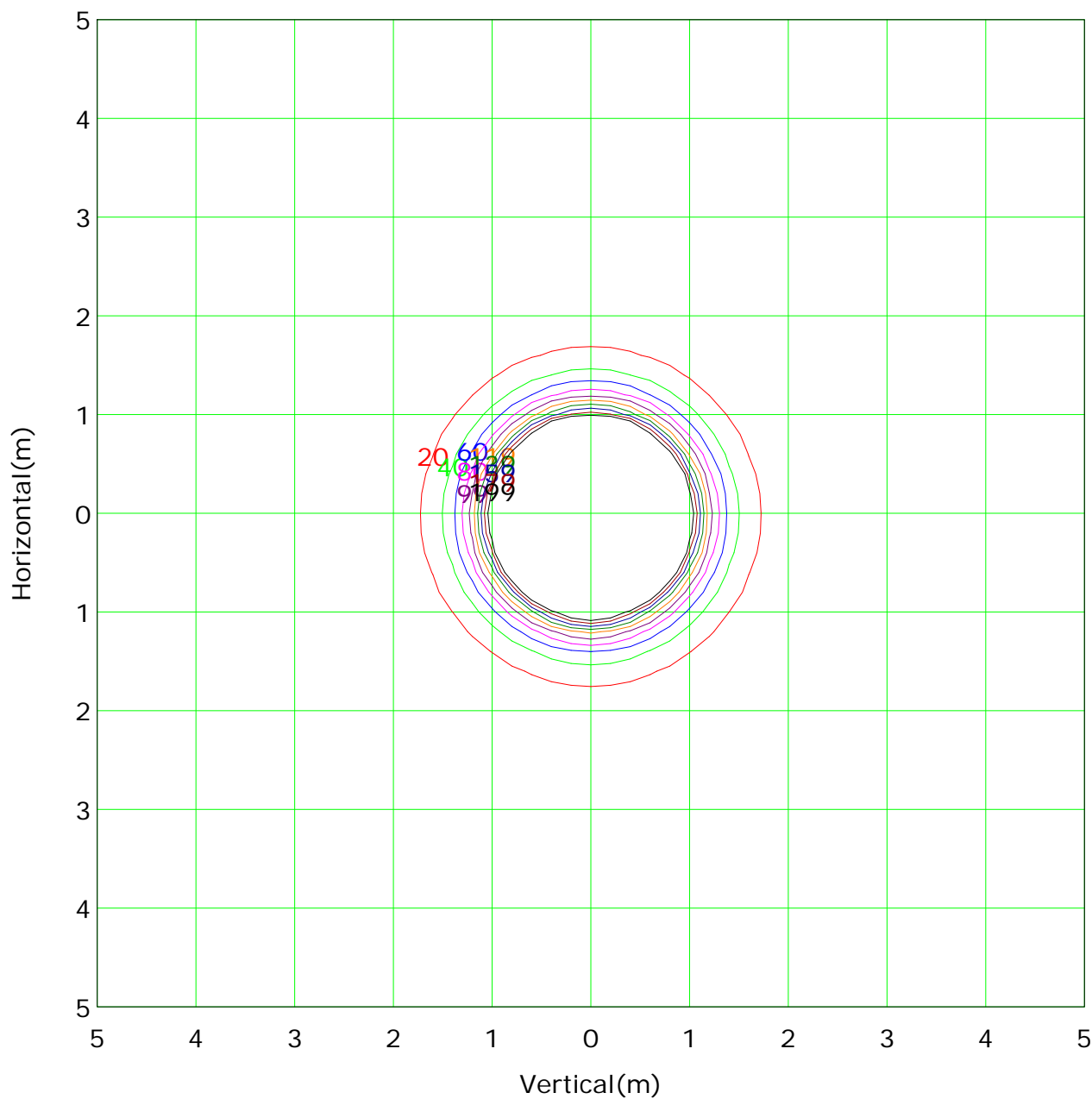
Test Device: CHL-6E

Distance: 3.000 m

Humidity:

Inspector:

IsoLux Plot



Mounting Height: 3m		Max Lux(100%): 1988 lx	
— (1%):	20 lx	— (2%):	40 lx
— (3%):	60 lx	— (4%):	80 lx
— (5%):	99 lx	— (6%):	119 lx
— (7%):	139 lx	— (8%):	159 lx
— (9%):	179 lx	— (10%):	199 lx

C Plane (°):0.0-180.0: 180.0

Test Lab:

Test Type: TYPE C

Temperature:

Operator:

Gamma Plane (°):0.0-90.0: 1.0

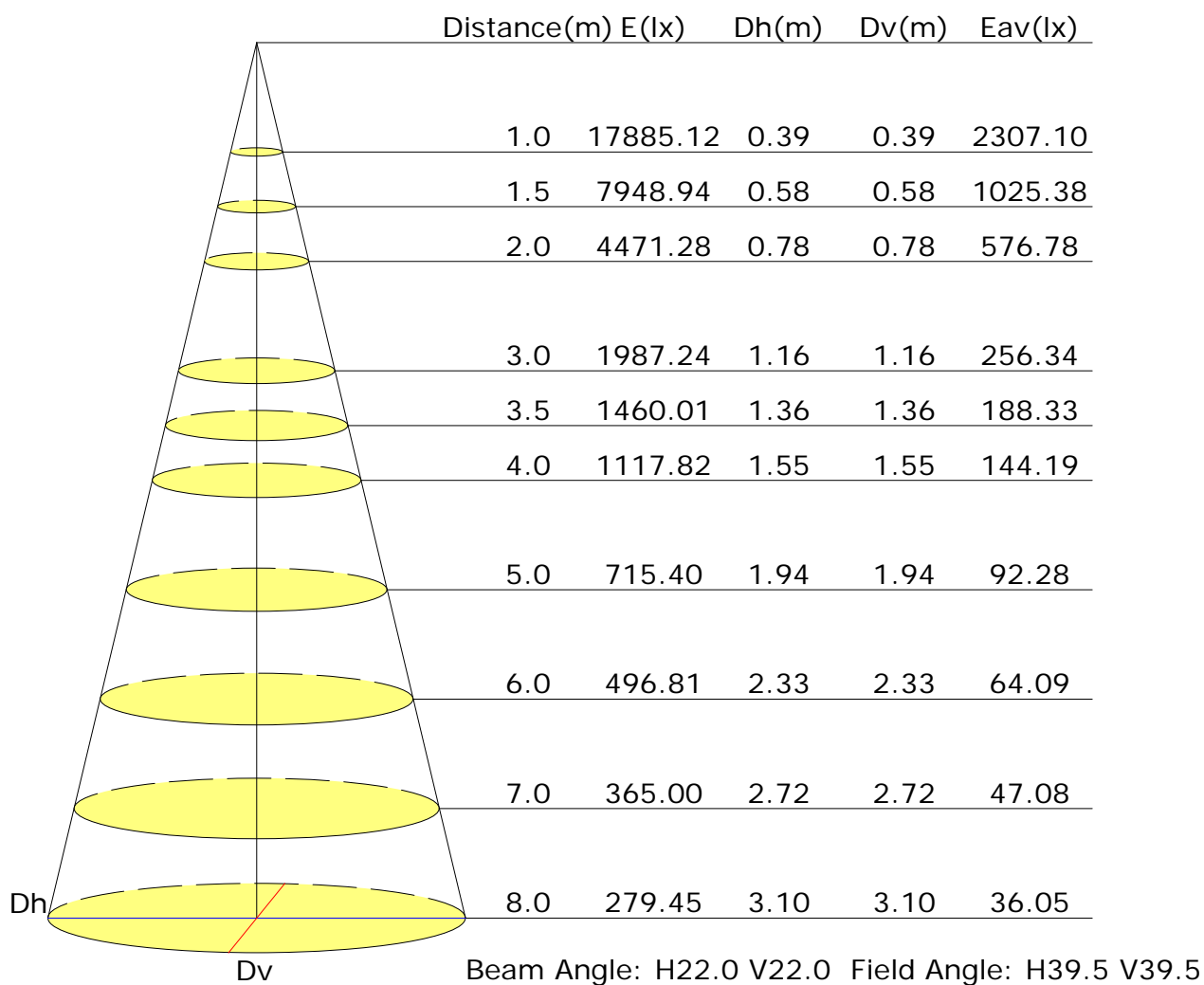
Test Device: CHL-6E

Distance: 3.000 m

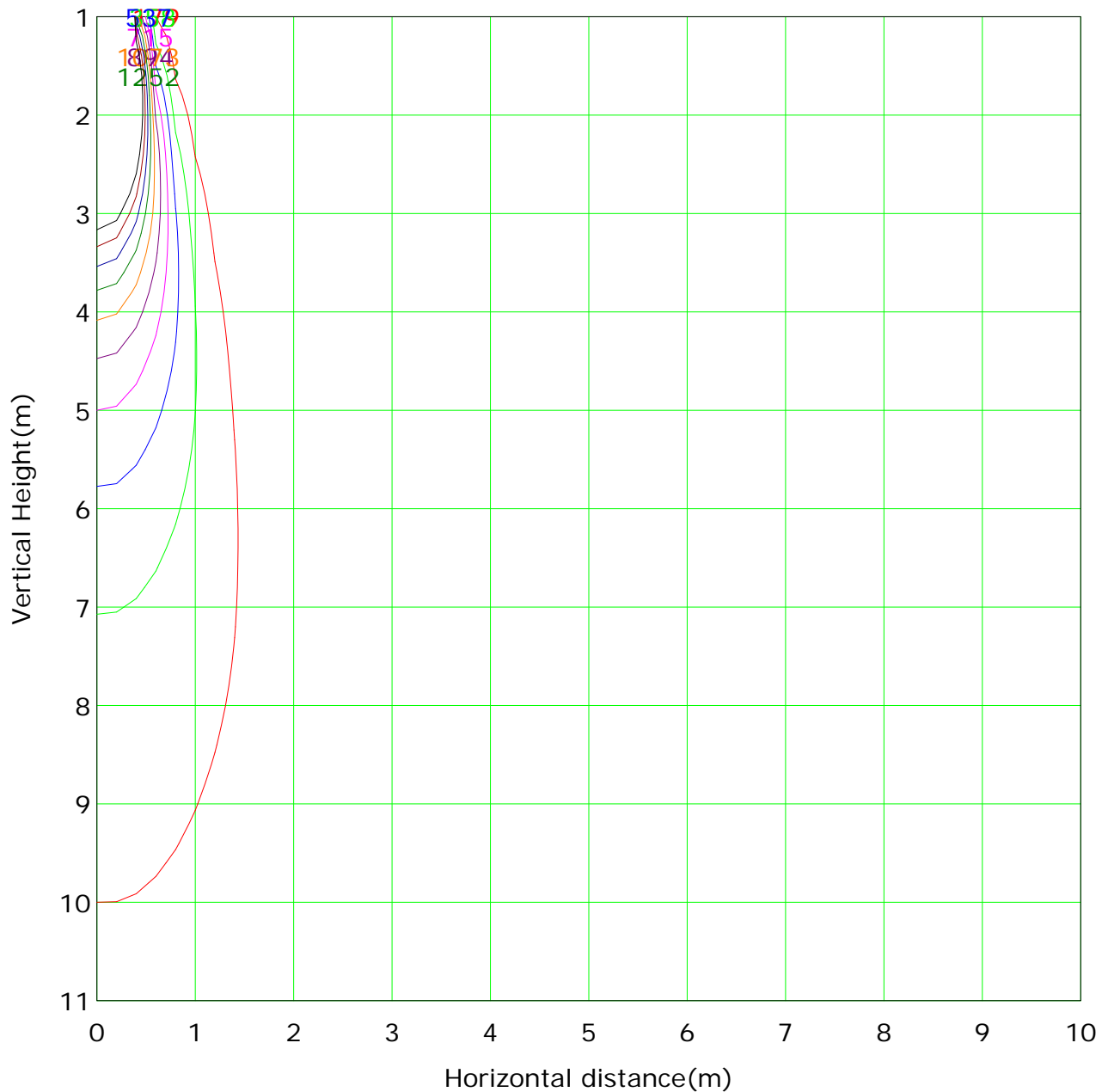
Humidity:

Inspector:

Illuminance at a Distance



Vertical IsoLux Plot



Lowest(m): 1m Highest(m): 11 Max Lux: 17885	
(1%): 179 lx	(2%): 358 lx
(3%): 537 lx	(4%): 715 lx
(5%): 894 lx	(6%): 1073 lx
(7%): 1252 lx	(8%): 1431 lx
(9%): 1610 lx	(10%): 1789 lx

C Plane (°):0.0-180.0: 180.0

Test Lab:

Test Type: TYPE C

Temperature:

Operator:

Gamma Plane (°):0.0-90.0:1.0

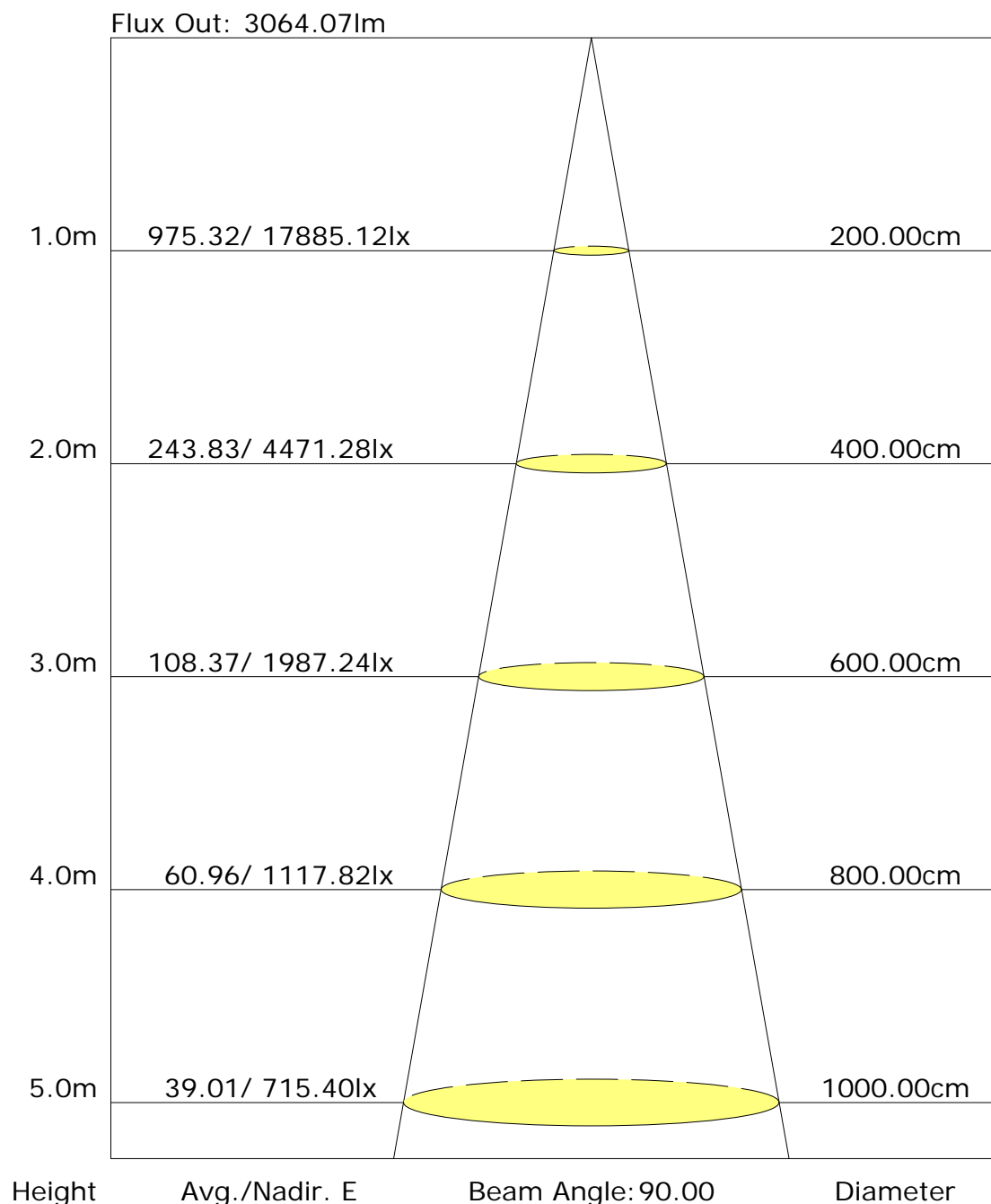
Test Device: CHL-6E

Distance: 3.000 m

Humidity:

Inspector:

The average illuminance effective figure



C Plane (°): 0.0-180.0: 180.0

Test Lab:

Test Type: TYPE C

Temperature:

Operator:

Gamma Plane (°): 0.0-90.0: 1.0

Test Device: CHL-6E

Distance: 3.000 m

Humidity:

Inspector:

Candlepower Table

Unit: cd

GVC	C0.0	C180.0								
G0.0	17885.1	17885.1								
G1.0	17899.6	17676.4								
G2.0	17725.2	17233.6								
G3.0	17325.8	16594.7								
G4.0	16743.8	15821.2								
G5.0	16009.1	14942.8								
G6.0	15160.6	13975.9								
G7.0	14203.6	12911.4								
G8.0	13173.5	11783.7								
G9.0	12090.9	10629.7								
G10.0	10942.3	9405.2								
G11.0	9717.9	8087.7								
G12.0	8445.5	6907.5								
G13.0	7244.6	5842.1								
G14.0	6157.5	4882.4								
G15.0	5179.8	4033.0								
G16.0	4303.2	3303.8								
G17.0	3543.2	2682.9								
G18.0	2926.0	2180.5								
G19.0	2419.1	1779.3								
G20.0	1988.0	1461.2								
G21.0	1627.5	1201.9								
G22.0	1333.8	993.1								
G23.0	1088.0	824.1								
G24.0	889.2	685.9								
G25.0	726.5	564.8								
G26.0	596.4	469.9								
G27.0	490.7	389.5								
G28.0	404.8	324.4								
G29.0	334.4	274.7								
G30.0	281.9	231.3								
G31.0	238.6	197.9								
G32.0	203.3	173.5								
G33.0	175.3	150.9								
G34.0	155.4	134.6								
G35.0	139.2	122.9								
G36.0	125.6	110.3								

C Plane (°): 0.0-180.0: 180.0

Test Lab:

Test Type: TYPE C

Temperature:

Operator:

Gamma Plane (°): 0.0-90.0: 1.0

Test Device: CHL-6E

Distance: 3.000 m

Humidity:

Inspector:

Candlepower Table (Continue 1)

Unit: cd

GVC	C0.0	C180.0								
G37.0	116.6	103.0								
G38.0	108.4	97.6								
G39.0	101.2	86.8								
G40.0	98.5	83.1								
G41.0	86.8	78.6								
G42.0	83.1	75.0								
G43.0	79.5	73.2								
G44.0	78.6	71.4								
G45.0	76.8	69.6								
G46.0	75.0	67.8								
G47.0	74.1	65.1								
G48.0	72.3	62.3								
G49.0	67.8	58.7								
G50.0	65.1	56.0								
G51.0	60.5	53.3								
G52.0	57.8	50.6								
G53.0	53.3	46.1								
G54.0	48.8	43.4								
G55.0	45.2	37.0								
G56.0	41.6	33.4								
G57.0	36.2	28.0								
G58.0	32.5	25.3								
G59.0	28.9	20.8								
G60.0	23.5	16.3								
G61.0	19.0	13.6								
G62.0	14.5	9.9								
G63.0	11.8	7.2								
G64.0	8.1	6.3								
G65.0	7.2	2.7								
G66.0	4.5	0.9								
G67.0	2.7	0.0								
G68.0	0.9	0.0								
G69.0	0.0	0.0								
G70.0	0.0	0.0								
G71.0	0.0	0.0								
G72.0	0.0	0.0								
G73.0	0.0	0.0								

C Plane (°): 0.0-180.0: 180.0

Test Lab:

Test Type: TYPE C

Temperature:

Operator:

Gamma Plane (°): 0.0-90.0: 1.0

Test Device: CHL-6E

Distance: 3.000 m

Humidity:

Inspector:

