

Report No.: 93.05511-ECO Surface Mounted Test Time: 2022-04-26 20:48

Luminaire Property

Luminaire Category: Bridgelux V6HD 3000K CRI90

Voltage: 217.7 V

Current: 0.070 A

Power: 14.70 W

Power Factor: 0.966

Photometric Results

CIE Class: Direct

Measurement Flux: 921.6 lm

Downward Ratio: 100%

Total Rated Lamp Lumens: 921.6 lm

Efficiency: 100%

Upward Ratio: 0%

Horizontal Diffuse Angle(25%,50%,75%,100%): H23.8,H16.6,H10.5,H0

Vertical Diffuse Angle(25%,50%,75%,100%): V23.8,V16.6,V10.5,V0

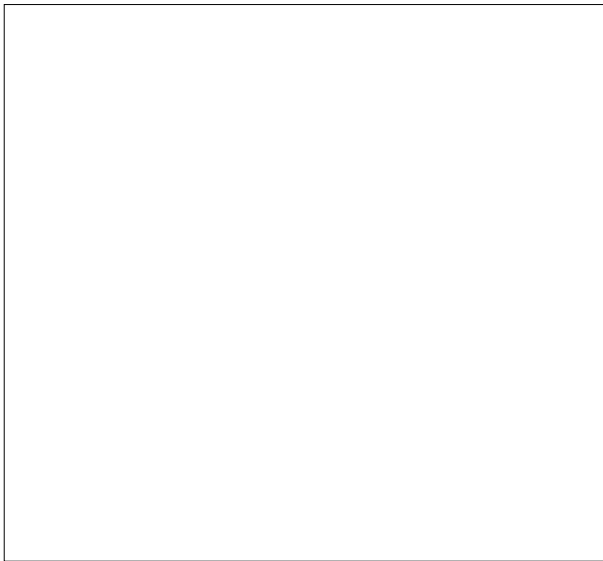
Luminaire Efficacy Rating (LER): 63

Central Intensity: 8449.17 cd

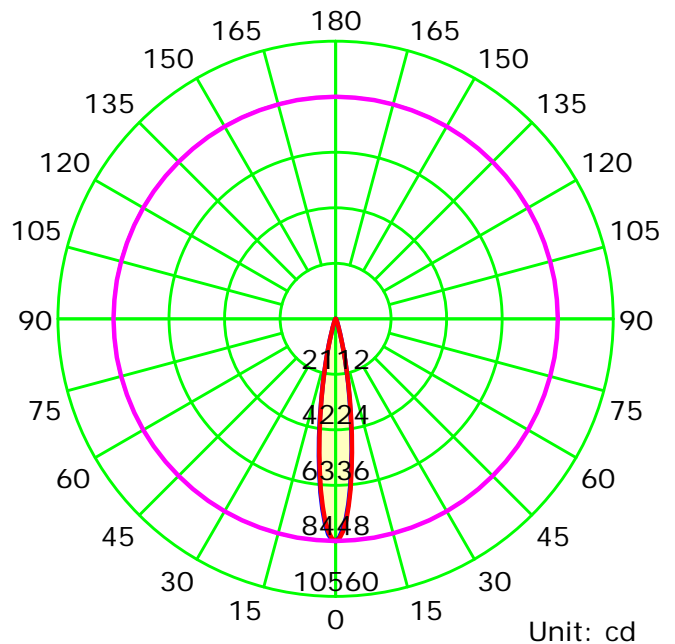
Max. Intensity: 8449.17 cd

Pos of Max. Intensity: H0 V0

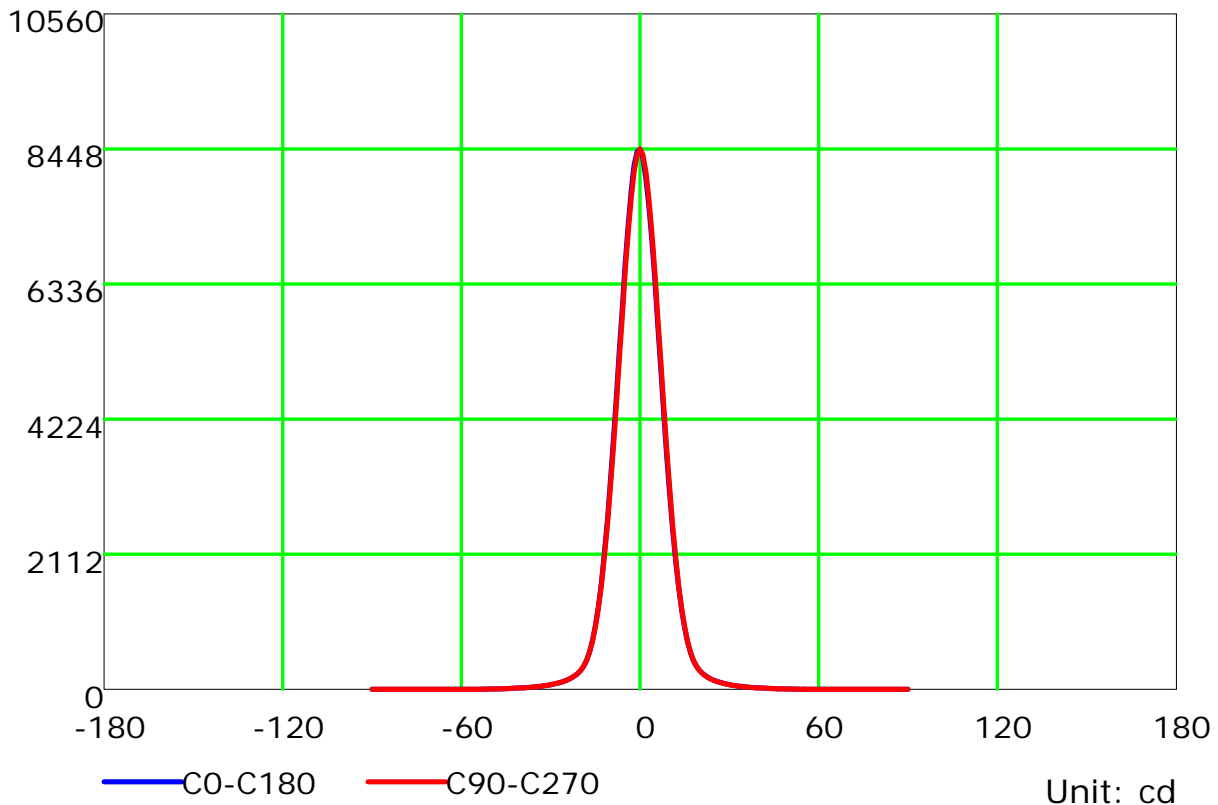
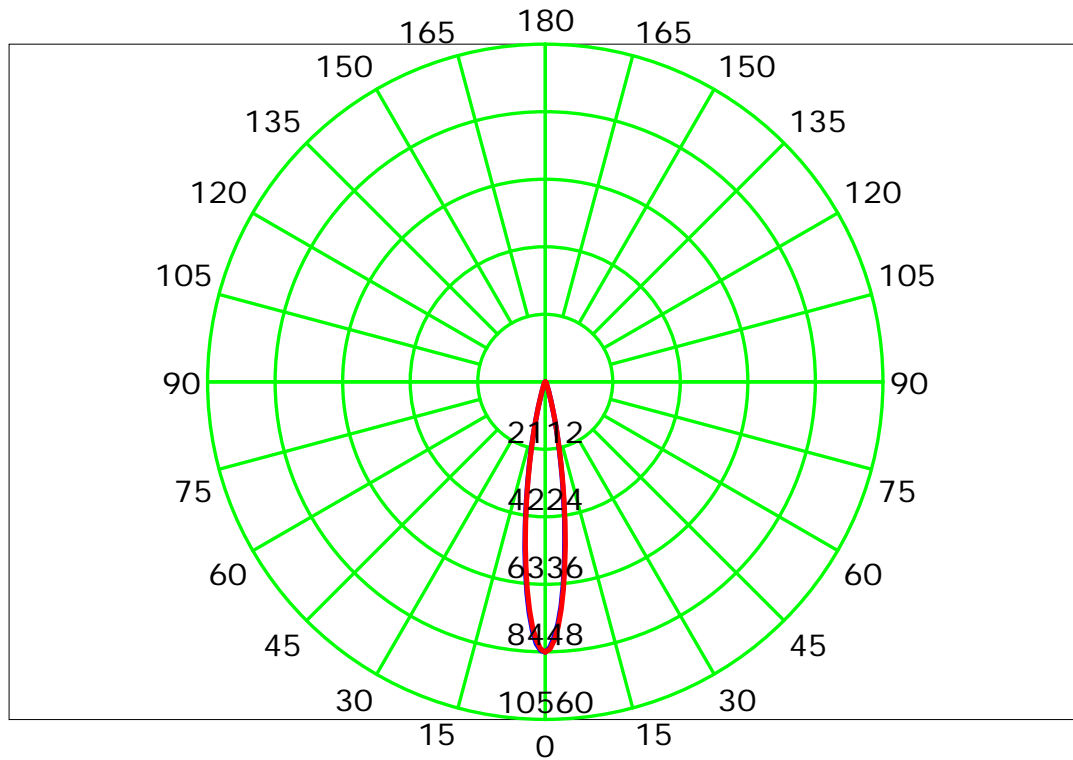
Picture Of Luminaire



Luminous Intensity Distribution Curve



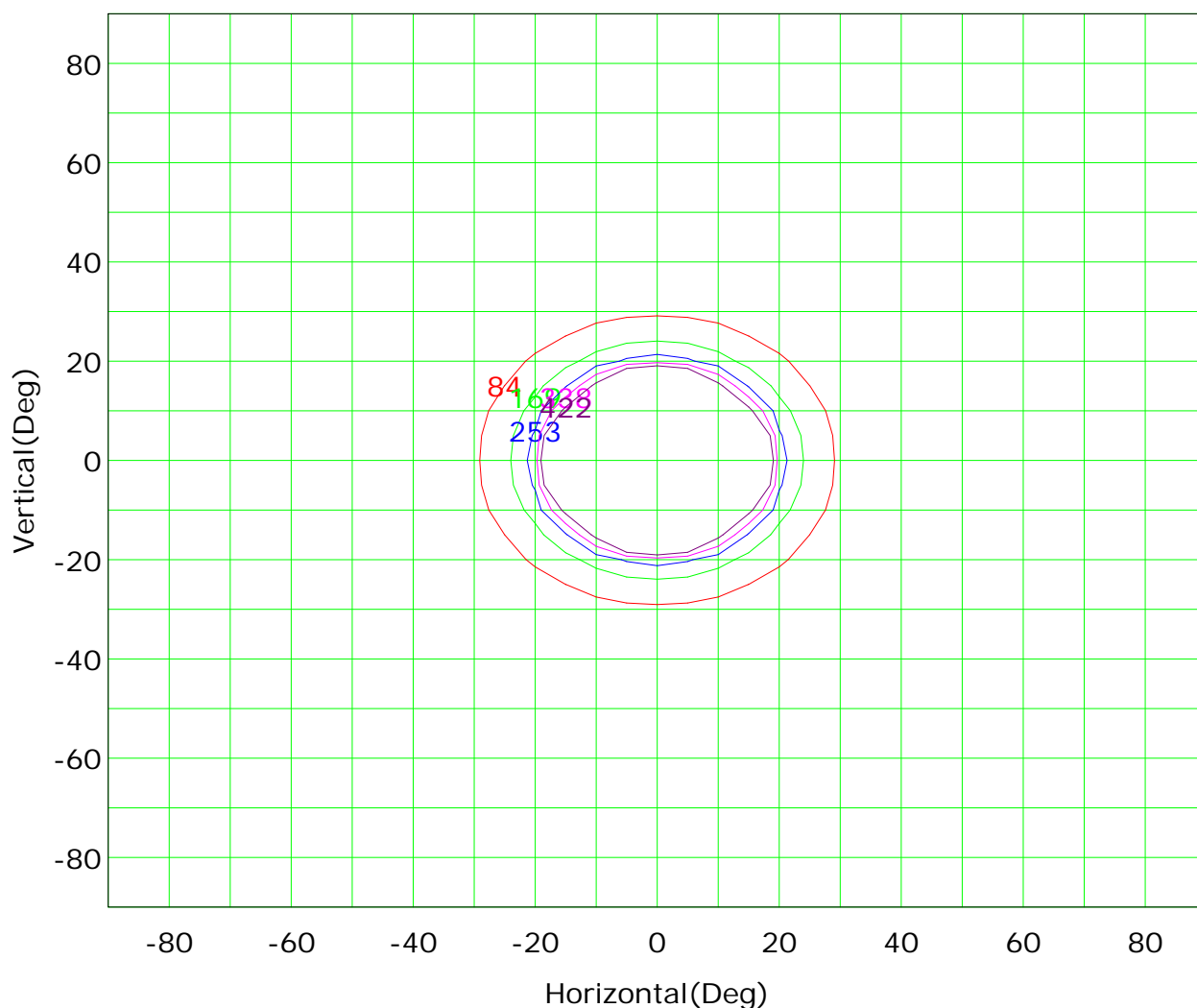
Luminous Intensity Distribution Curve



C Plane (°): 0.0-180.0: 180.0
Test Lab:
Test Type: TYPE C
Temperature:
Operator:

Gamma Plane (°): 0.0-90.0: 1.0
Test Device: CHL-6E
Distance: 3.000 m
Humidity:
Inspector:

Isocandela (rectangle)



Imax (100%): 8449 cd

(1%):	84 cd	(2%):	169 cd
(3%):	253 cd	(4%):	338 cd
(5%):	422 cd		

C Plane (°): 0.0-180.0: 180.0

Test Lab:

Test Type: TYPE C

Temperature:

Operator:

Gamma Plane (°): 0.0-90.0: 1.0

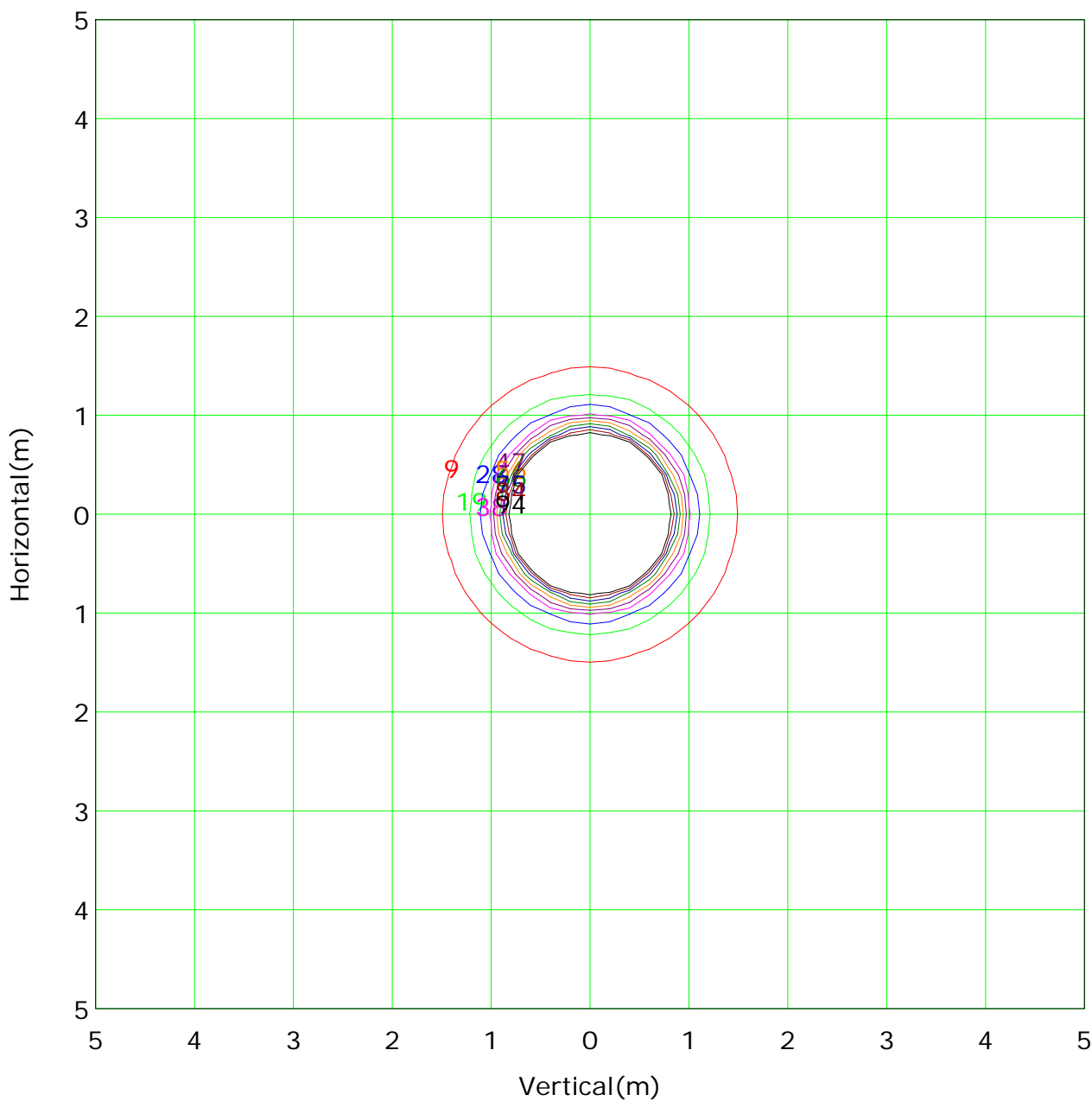
Test Device: CHL-6E

Distance: 3.000 m

Humidity:

Inspector:

IsoLux Plot



Mounting Height: 3m		Max Lux(100%): 939 lx	
— (1%):	9 lx	— (2%):	19 lx
— (3%):	28 lx	— (4%):	38 lx
— (5%):	47 lx	— (6%):	56 lx
— (7%):	66 lx	— (8%):	75 lx
— (9%):	84 lx	— (10%):	94 lx

C Plane (°): 0.0-180.0: 180.0

Test Lab:

Test Type: TYPE C

Temperature:

Operator:

Gamma Plane (°): 0.0-90.0: 1.0

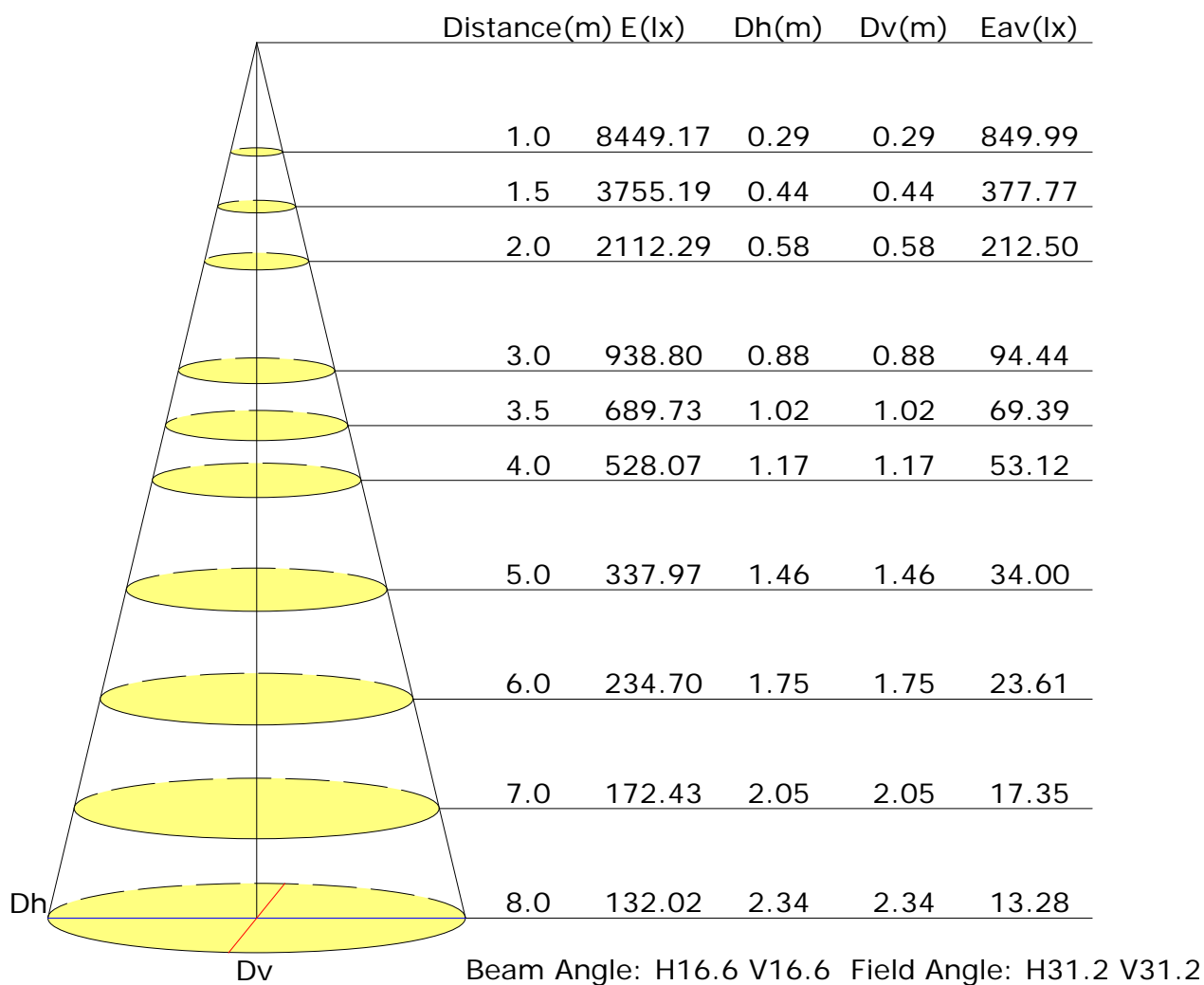
Test Device: CHL-6E

Distance: 3.000 m

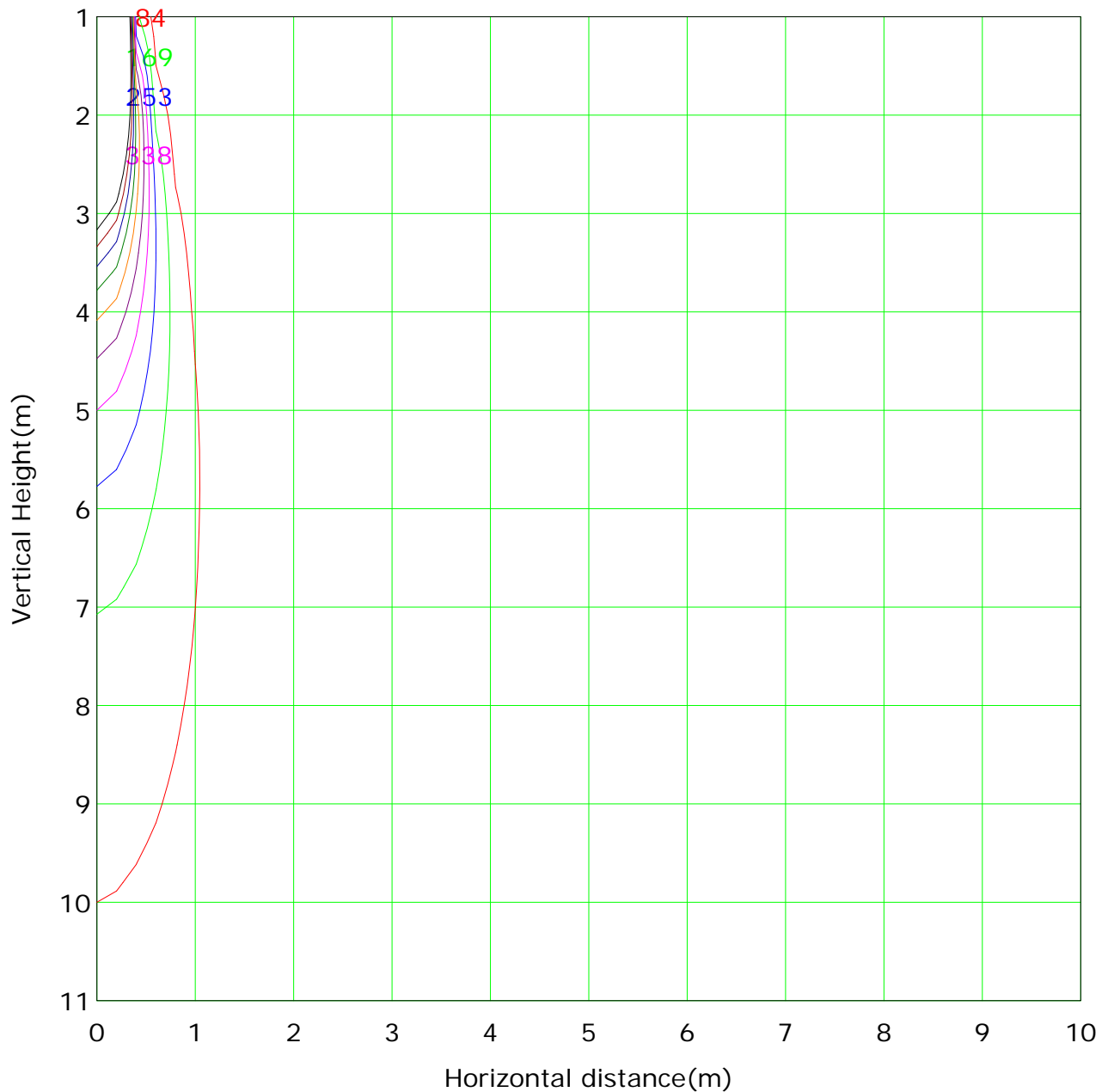
Humidity:

Inspector:

Illuminance at a Distance



Vertical IsoLux Plot



Lowest(m): 1m Highest(m): 11 Max Lux: 8449	
(1%): 84 lx	(2%): 169 lx
(3%): 253 lx	(4%): 338 lx
(5%): 422 lx	(6%): 507 lx
(7%): 591 lx	(8%): 676 lx
(9%): 760 lx	(10%): 845 lx

C Plane (°): 0.0-180.0: 180.0

Test Lab:

Test Type: TYPE C

Temperature:

Operator:

Gamma Plane (°): 0.0-90.0: 1.0

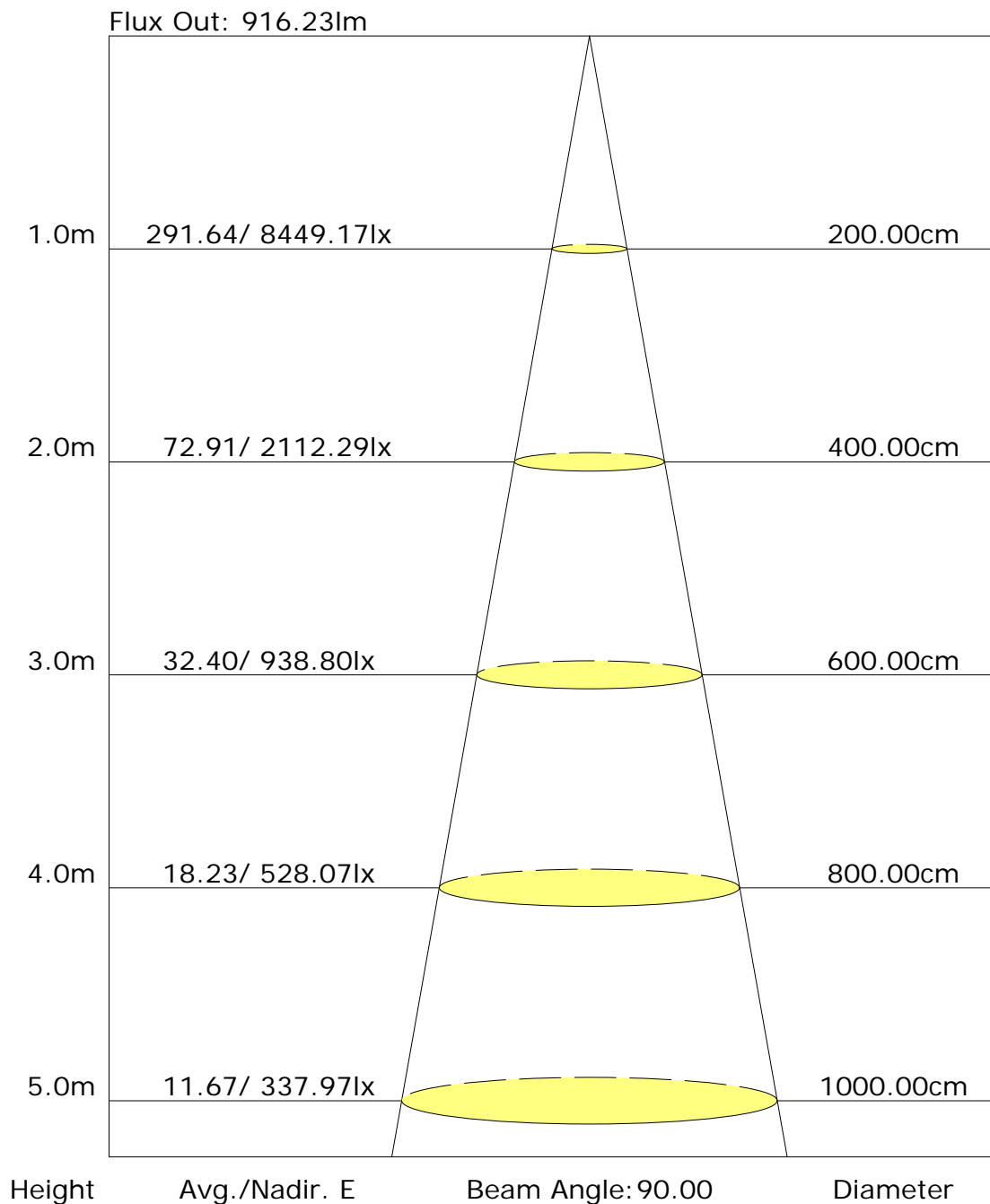
Test Device: CHL-6E

Distance: 3.000 m

Humidity:

Inspector:

The average illuminance effective figure



Candlepower Table

Unit: cd

G\C	C0.0	C180.0								
G0.0	8449.2	8449.2								
G1.0	8310.9	8408.5								
G2.0	7983.8	8197.0								
G3.0	7569.0	7792.2								
G4.0	7031.3	7250.9								
G5.0	6397.9	6641.9								
G6.0	5699.4	5942.4								
G7.0	5007.1	5265.6								
G8.0	4322.2	4559.8								
G9.0	3639.0	3867.6								
G10.0	3035.4	3221.5								
G11.0	2489.6	2628.7								
G12.0	2005.2	2122.7								
G13.0	1596.8	1668.2								
G14.0	1243.4	1294.9								
G15.0	963.3	990.4								
G16.0	741.0	759.1								
G17.0	570.2	582.0								
G18.0	448.2	451.8								
G19.0	359.6	356.9								
G20.0	296.4	291.9								
G21.0	250.3	244.0								
G22.0	213.3	208.7								
G23.0	183.4	180.7								
G24.0	159.0	157.2								
G25.0	138.3	136.4								
G26.0	122.0	119.3								
G27.0	108.4	104.8								
G28.0	95.8	94.0								
G29.0	84.0	83.1								
G30.0	73.2	72.3								
G31.0	65.1	65.1								
G32.0	57.8	57.8								
G33.0	51.5	50.6								
G34.0	45.2	44.3								
G35.0	39.8	39.8								
G36.0	36.2	36.2								

C Plane (°): 0.0-180.0: 180.0

Test Lab:

Test Type: TYPE C

Temperature:

Operator:

Gamma Plane (°): 0.0-90.0: 1.0

Test Device: CHL-6E

Distance: 3.000 m

Humidity:

Inspector:

Candlepower Table (Continue 1)

Unit: cd

GVC	C0.0	C180.0								
G37.0	32.5	30.7								
G38.0	28.0	28.9								
G39.0	24.4	24.4								
G40.0	23.5	23.5								
G41.0	20.8	20.8								
G42.0	19.0	18.1								
G43.0	15.4	16.3								
G44.0	14.5	14.5								
G45.0	12.6	11.8								
G46.0	9.9	9.9								
G47.0	9.9	9.9								
G48.0	8.1	7.2								
G49.0	7.2	7.2								
G50.0	6.3	6.3								
G51.0	6.3	6.3								
G52.0	4.5	4.5								
G53.0	2.7	2.7								
G54.0	1.8	0.9								
G55.0	2.7	0.9								
G56.0	0.9	0.9								
G57.0	0.0	0.0								
G58.0	0.0	0.0								
G59.0	0.0	0.0								
G60.0	0.0	0.0								
G61.0	0.0	0.0								
G62.0	0.0	0.0								
G63.0	0.0	0.0								
G64.0	0.0	0.0								
G65.0	0.0	0.0								
G66.0	0.0	0.0								
G67.0	0.0	0.0								
G68.0	0.0	0.0								
G69.0	0.0	0.0								
G70.0	0.0	0.0								
G71.0	0.0	0.0								
G72.0	0.0	0.0								
G73.0	0.0	0.0								

C Plane (°): 0.0-180.0: 180.0

Test Lab:

Test Type: TYPE C

Temperature:

Operator:

Gamma Plane (°): 0.0-90.0: 1.0

Test Device: CHL-6E

Distance: 3.000 m

Humidity:

Inspector:

